

## PRACTICAL DERMOSCOPY

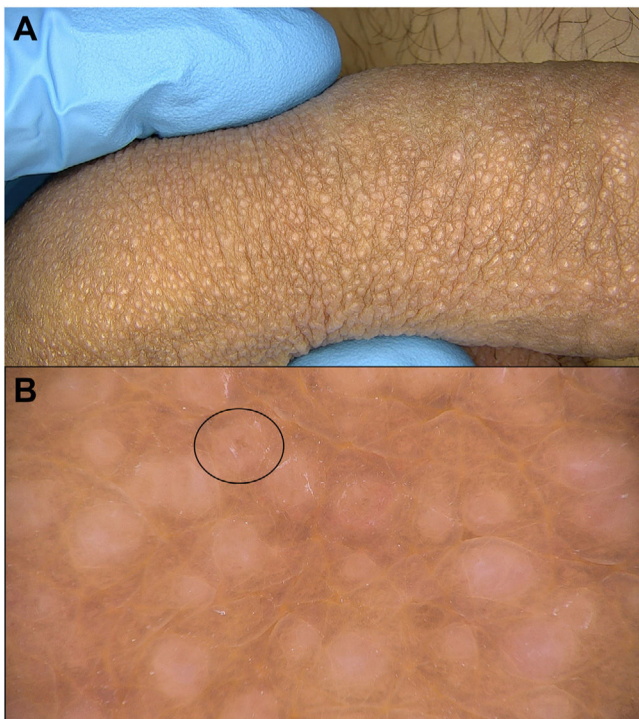
### [Translated article] Progressively Appearing Papules on the Penis



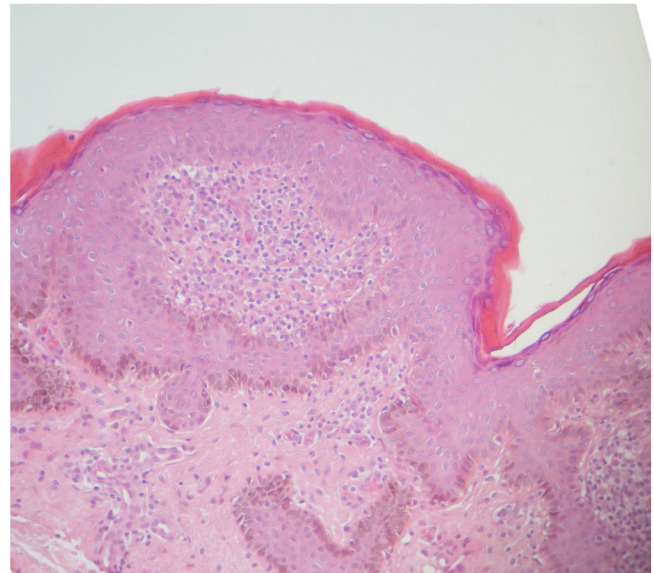
#### Pápulas peneanas de aparición progresiva

#### Case Presentation

A 25-year-old man presented for evaluation of slightly itchy penile papules that had appeared progressively over



**Figure 1** Case presentation. A, Clinical presentation. B, Dermoscopic findings (obtained using Fotofinder digital dermoscopy, 20× magnification).



**Figure 2** Punch biopsy histology (hematoxylin-eosin).

the preceding year. Examination revealed numerous rounded, shiny, pale white papules on the shaft of the penis (Fig. 1A) and some isolated papules on the glans penis. No other similar lesions were observed. A skin biopsy was taken to confirm the diagnosis (Fig. 2).

#### What is Your Diagnosis?

Lichen nitidus.

#### Comment

Lichen nitidus<sup>1</sup> is an inflammatory process that manifests clinically with uniform, whitish or skin-colored, generally asymptomatic papules of 1–2 mm in size. Dermoscopic examination reveals structureless white areas (corresponding to papules), often with a darker central spot, which tends to diminish or interrupt the overlying skin markings, and a characteristic “sunburst” pattern (skin markings that radiate from the papules) that is particularly visible with nonpolarized dermoscopy.<sup>2,3</sup>

DOI of original article:  
<https://doi.org/10.1016/j.ad.2022.05.027>

<https://doi.org/10.1016/j.ad.2023.04.007>

0001-7310/© 2022 AEDV. Published by Elsevier España, S.L.U. This is an open access article under the CC BY-NC-ND license (<http://creativecommons.org/licenses/by-nc-nd/4.0/>).

The most important conditions to include in the differential diagnoses of lichen nitidus of the penis are Fordyce glands and *Molluscum contagiosum* lesions. Dermoscopy is a useful tool to distinguish between these 2 entities: Fordyce glands appear as yellowish lobules surrounded by vascular garland-like structures, while *Molluscum contagiosum* lesions appear as polyglobular, yellowish-white, amorphous structures with a peripheral crown of fine vessels.

### Conflicts of Interest

The authors declare that they have no conflicts of interest.

### References

1. Vilanova X, Cardenal C, Capdevila JM. Liquen nitidus. *Actas Dermosifiliogr.* 1957;48:221–9.
2. Jakhar D, Grover C, Kaur I, Sharma S. Dermatoscopic features of lichen nitidus. *Pediatr Dermatol.* 2018;35:866–7.
3. Neema S, Goyal S. Dermoscopy of anserine folliculosis. *Dermatol Pract Concept.* 2021;11:e2021019.

A. Martin-Gorgojo\*, A. Comuni3n-Artieda, F.J. Bru-Gorraiz  
*Secci3n de Especialidades M3dicas, Servicio de ITS/Dermatolog3a, Ayuntamiento de Madrid, Madrid, Spain*

\*Corresponding author.

*E-mail address:* [alejandromartingorgojo@aedv.es](mailto:alejandromartingorgojo@aedv.es)

(A. Martin-Gorgojo).